

# Recycling Guide

Dear tenants,

This pamphlet is to inform landlords and tenants of what they can, and can't, recycle.

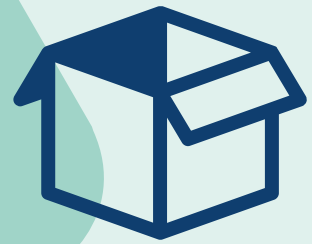
The following items can be recycled:



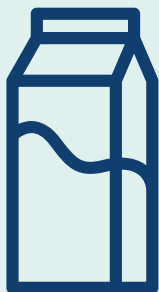
Glass Jars and  
Bottles



Aluminum  
cans, foil, tin,  
steel cans



Cardboard,  
paper towel  
rolls, boxes



Beverage  
cartons and  
soda can  
plastic rings



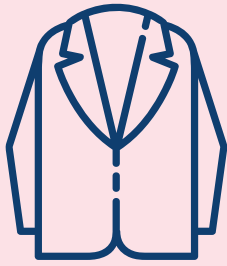
Plastic bottles  
and containers  
(#1-5, 7  
accepted)



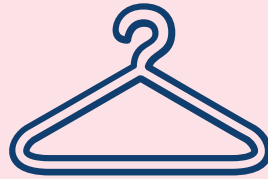
Junk paper,  
magazines,  
newspaper,  
paper, cards



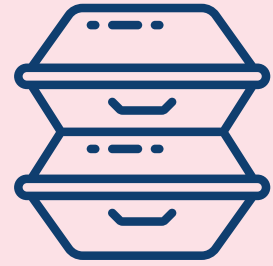
The following items can not be recycled:



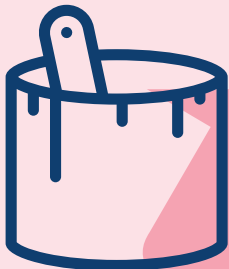
Clothes and  
linens



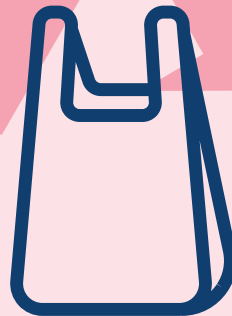
Plastic and  
metal hangers



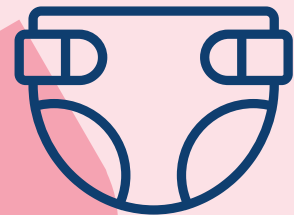
Styrofoam,  
construction  
debris



Paint and  
spray paint



Unnumbered  
plastics,  
plastic bag,  
plastic #6



Diapers and  
feminine  
products

Recycling should be placed in a garbage bag or recycling container.

The recycling container is located:

The recycling container will be serviced weekly on:

For questions or concerns, please contact: